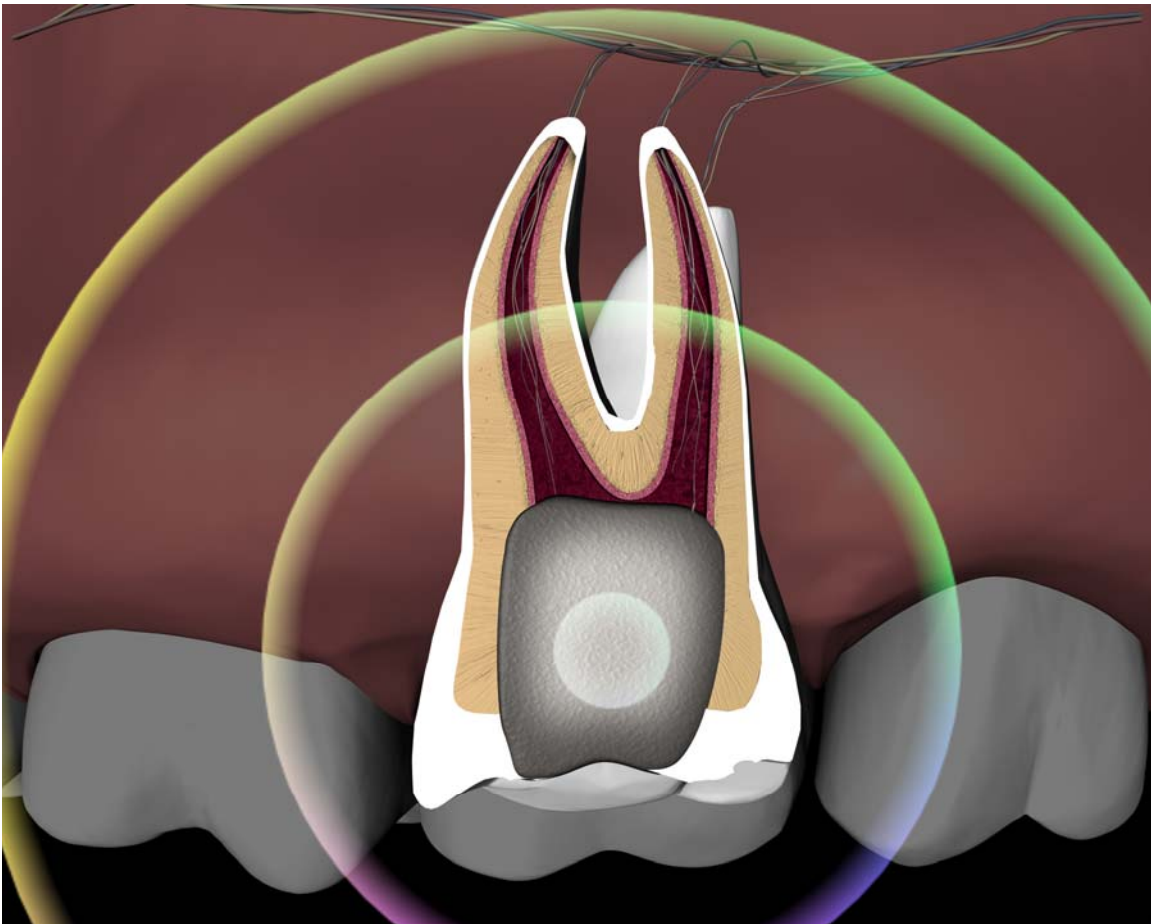




The Effects of Improper Dentistry on Overall Health

Teeth are the most important access to health. Every material we insert in a tooth is going to affect the health of entire body. Because of that we really need to be aware of how dental materials affect bodily functions.

A large percentage of discomfort and serious health problems are due to incompatible frequencies of dental materials, and in many cases this becomes the catalyst to a shortening of life and eventual fatal outcome.



Healthy teeth breathe freely. Blood circulates easily in the vessels. Damaged teeth quickly show an effect. When a crown or filling with polluting frequencies is installed,

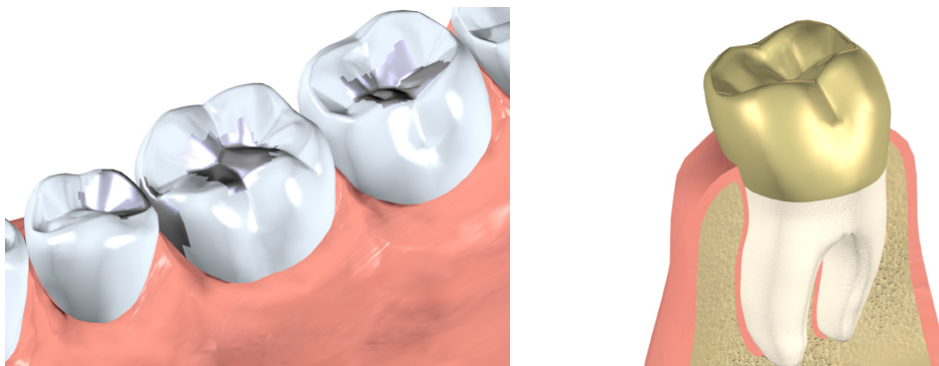
the frequencies seemingly form a shadow, causing a blockage in the root of the tooth, spasm and decrease in size. Blood ceases to circulate and the bone in the jaw starts to deteriorate.

The nerves become inflamed and damaged. The genes targeted by the polluting frequency create deformed mutated cells. The creation of disease is dependent on the character of frequencies.

In the body certain blocked areas will partially spasm, become compressed and receive incorrect information related to health and oxygen supply. The metabolism is slowed down, with a dramatic change in activity of the heart tissue, blood vessels in the lungs, etc.

Nature has defined a rather small parameter of range of frequencies at which a live body is able to carry out functions actively and without serious consequences. Frequencies not included in the framework of the range of health frequencies force a body to spend many internal biological and biochemical resources in order to adapt to negative frequencies.

Environmental frequency influence from materials of clothing, bedding, etc. continually come in contact with the body. The most important influence of constant frequencies comes from dental materials. This suppresses the cells of the body depending on the force of influence from these polluting frequencies creating intercellular changes and deviations from the norm of standard behavior. This leads a body to various conditions and diseases.



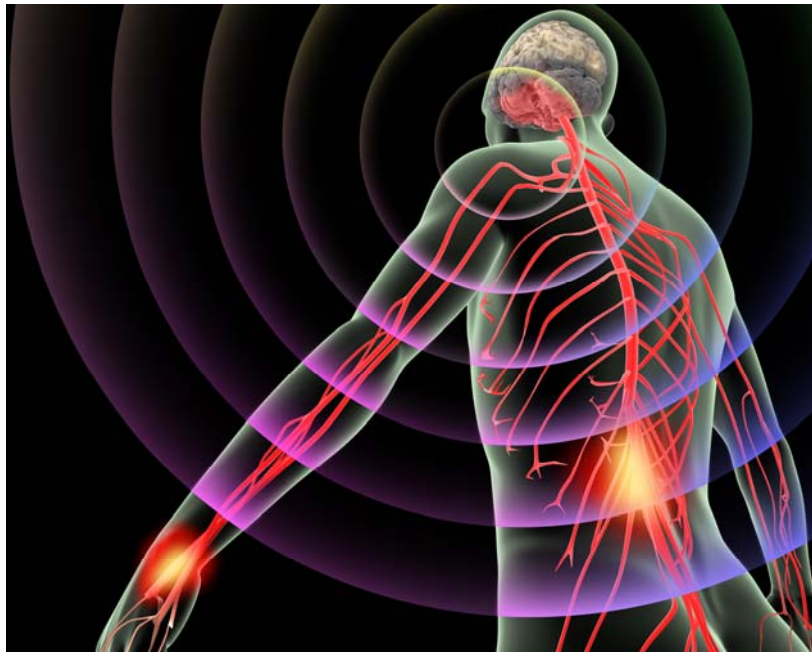
Dental alloys should be neutral and naturally compatible to the teeth tissues, maximally free of electrical conductivity and not produce toxic frequencies. Composite and bonding cements or other dental materials not compatible to Health Frequency® negatively affect brain and thyroid functions; change the metabolism and also the temperature regime in the body, provoking discomfort, pain and numerous other conditions.

The destruction of the enamel surface of the teeth begins from various bacteria, mechanics of hard chewing, or from destruction by frequency invasions. The repair of a tooth with an application of dental materials not related to Health Frequency®, almost immediately changes the essence of the health frequency matrix of cells (the blueprint protective ability of dental tissues.)

Signals sent constantly from replacement materials create an influence, which changes the frequency of teeth, gum tissues and adjoining brain tissues to the level of radiating frequency coming from the replacement materials.

The resistance of the immune system and the protective ability of cells which stay under the influence of polluting frequencies have no essential value as the body is not adapted to resist a constant influence from radiating frequencies from replacement materials. This in turn causes a change of metabolism, blood circulation and exchange processes not only in the repaired area, but also in the adjoining sections of the middle brain which transfers the intruding damaged information to distant cellular structures. Relevancy and speed of change depends on the vibration frequency ability of the replacement materials.

Vibrations of frequency properties of dental materials should correspond to the vibration frequency property of healthy cells. If this condition is not observed, cells adjoining the inappropriate materials will be electromagnetically and bio-chemically affected and constantly change to inflammatory, anemic or painful signals. They transform and mutate according to the altered frequency. Those injured cells accumulate and reproduce as changed cells to the point where there is an appearance of a strongly traumatized section. The accruing mass increases and pain begins to be transferred to various areas of the body.



A simple filling from the wrong material in any tooth creates an accumulation of negative frequencies in the body. Consequences of such accumulation depend on frequency parameters radiating from the installed dental material and can be expressed as arthritic and rheumatic changes as well as the occurrence of autoimmune and chronic diseases, loss of memory, Alzheimer's, Parkinson's, M.S., cancer and many other

conditions. An overwhelming majority of these appear after the application of restorative dental materials radiating polluting frequencies to the cellular structures in the body.

Cements as well as medicines and vitamins can cause an occurrence of side effects. Application of one cement of a certain frequency and chemical compound leads to inflammatory processes in the neck area, shoulders, arms and backbone with subsequent accumulation in muscles, bones and blood vessels. Another cement causes problems in the intestines. A third, changes in the skin, head, and muscles and can articulate painful symptoms including loss of memory, occurrence of tumors, chronic diseases, destruction of the cardiovascular system, blood vessels in the brain etc. Some kinds of cements porcelains and metals render a very strong influence on the work of the thyroid gland, the vascular system and the brain, creating cardiovascular problems.

Deformity of the skull, neck, back, fingers and toes, basically occurs from dental materials blocking nervous and muscular functions of cellular structures, creating contractions and gradually changing the physics and processes of metabolism.

Composite cements bear the greatest degree of negative influence and gradual changes to our body due to the structural presence of polymeric resin substances, which strengthen the linking qualities of cement. Resin in the cement creates powerful blocking electromagnetic fields complicating the order of passage of exchange signals and begins to power a total change of nearby and distant cellular structures in our body.

The amount of cement used is not always important. The density of vibration frequency properties of the cement is the important influence on speed of accumulation and distribution of changes in various areas of the body.

The frequency features of some porcelains and metals applied in a restoration have great influence. The application of most of these materials creates a combination of radiating frequencies causing an occurrence of intercellular changes.

Up until now, no one has connected deterioration of sight, occurrence of muscular changes, back, knee or foot pains or pain in other areas of the body with installation of fillings or crowns, as changes and pains are not shown immediately. The appearance of change depends on the speed of accumulation of radiating frequencies in nervous, muscular and bone tissues. Therefore it becomes clear how important it is to use neutral cement.

Application of dental materials with compatible Health Frequency® activity suitable to healthy cells can achieve results so the cells of the body will perceive alien metals, cements and porcelains as a healthy body structure. The adjoining areas with these materials will react properly because those areas have similar cell frequency activity as a healthy body.

THE BRAIN

Electromagnetic blocking properties of most dental materials have an influence on the function of the sinus areas, eyes, brain and the entire body. Teeth are located in immediate proximity to the middle brain. Dental materials influence force of distribution of interrupting signals to the brain. The condition and working capacity of the middle brain directly depend on the condition of the teeth and gums. The magnetic properties of some dental materials magnetize, cause blockages and slow down circulation of blood in this area. This becomes a basis for the occurrence of destructive processes in the surrounding dental areas.



The constant incorrect signal influence of radiating frequencies emitted by some dental materials changes the property of the blood and vessels, influences nerve cells and is transferred to the brain. Incoming frequency to cellular structures relates information to areas of the brain which analyzes the frequency and biochemical condition of the body and reacts by sending coordinating commands through nerve structures to the immune system and various organs. The brain cannot distinguish that it is an unhealthy frequency and relies on the constant influencing signals. The work of the brain cells becomes dependent on interruptions from these incorrect signals.

Polluting frequencies extend as formed waves in all directions with the subsequent effect being an influence and prevention of brain cells to produce the correct electrical signals. This connection plays the major role in physical and intellectual conditions. The middle

brain adjusts practically all important life support functions, the work of the organs in the body, emotional condition and the activity of the protective functions of the immune system.

Electromagnetic fields radiating from dental materials have an influence on power, speed and directivity of signals produced in all areas in the brain, including the pituitary gland, thalamus and especially the work of the thyroid.

The location of the thyroid in immediate proximity to the oral cavity explains the degree of dependence of its functions on the condition of the teeth. Some dental materials can lead to an imbalance in the work of the thyroid by changing activity, speed of blood circulation in this area and temperature modes, and can provoke tumor growth processes. The temperature adjusting features of work and biochemical activity of various organs depends upon this, influencing the overall performance of the body and speed of ageing processes.

Usually a simple replacement of dental materials with Health Frequency® materials will show expected results, leading to a normalizing of biochemical processes, release of stress pressure, improvement of blood circulation, relief in the immune, muscular and nervous system and the return of many lost functions.

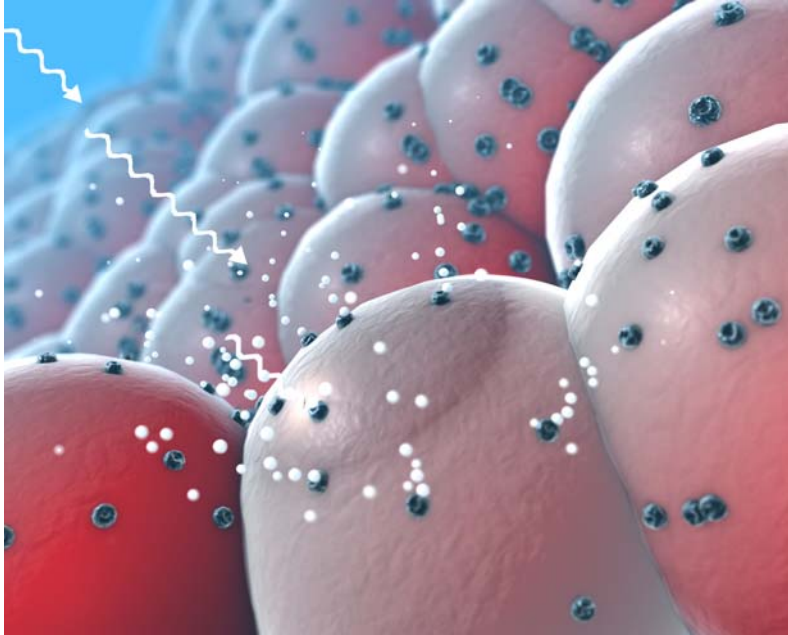
FIELDS

Dental materials render the greatest influence on the state of health of the immune system and high-grade work of cells in the body. The presence of constantly blocking electromagnetic fields from materials inappropriate to Health Frequency® parameters negatively affects the body chemistry and destroys the work of cellular and genetic structures in the body.

The majorities of these materials radiate intensive frequency handicaps, depriving cells in muscular, bone, vascular and blood structures in the head and brain of communicating opportunities, and in time changes their biochemical and physical condition. This leads to the loss of many functions responsible for processes in the entire body, due to frequency dependence on these materials. Subsequent changes and gradual loss of cellular intellect become a basic consequence due to the influence of polluting frequencies radiating specific changes from certain materials. This can include autoimmune and other chronic illnesses, M.S, Parkinson's, and Alzheimer's, osteoporosis, cancer as well as many other conditions.

The sequence and speed of changes occurring in brain cells, nerve endings, muscles and all areas in the body depends on intensity characteristics of radiating frequencies having constant influences on biochemical processes. Research into negative changes occurring in the body revealed the direct communication of characteristic frequency attributes of certain materials causing predictable changes. This research has shown that certain dental materials cause the appearance of specific changes in connected areas of the body.

Blocking features of those materials are expressed in an active ability of negative influence on the work of cells in all structures in the body, including the brain, nervous system, muscular and bone tissues, and all different areas. Some dental materials possess abilities to make signals of inflammatory, deaf or dead fields, which transform intercellular changes.



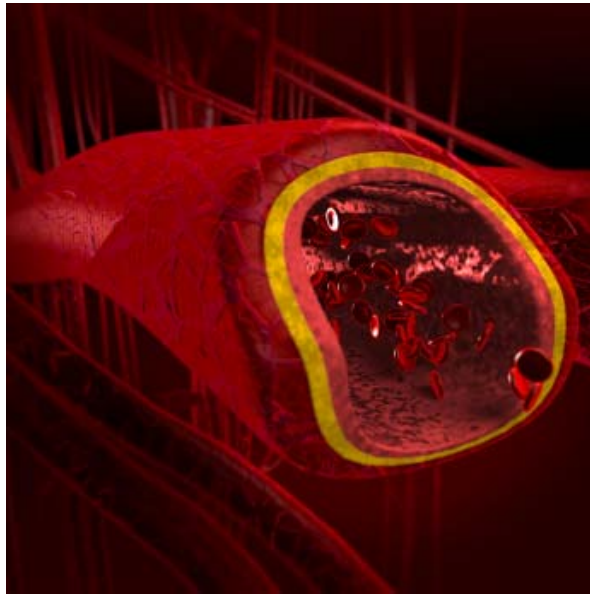
Deaf fields can be explained like materials made from a radio transmitter constantly producing electromagnetic static noise and partially muffling broadcast signals to the cells. Those signals radiating from certain materials bother the brain cells that are producing and sending correct information, and also bother nerve cells receiving and transmitting this information to various areas in the body.

Some dental materials create dead frequency fields, which block then extinguish intercellular functional exchange signals. This signal broadcast completely changes cellular activity, the ability of nervous cells to correctly perceive and transfer the correct information for physical and biological processes working in the body. If this area stays under the influence of those materials, after accumulating a critical frequency amount, the cells stop accepting life support nutrients and gradually begin to die off. This in turn, influences the metabolism and ability of cells to resist the occurrence of illness. The signal of the cells dying from influencing material starts to spread to vital areas in the body and can lead to a refusal of work and ultimately a fatal outcome.

A signal with magnetic properties of viscosity slows down ability of exchange processes in cells. The consequences from an influence of viscous fields includes occurrence of sinus problems, sensation of constant cold in extremities and in the entire body. Muscles gradually lose elasticity. The occurrence of most major diseases and formation of lymphomas and tumors is dependent on the degree and character of viscosity.

TUMORS

The majority of occurrence of tumor processes blocking physical activity and metabolism of cellular structures begins with power influences of polluting frequency. A specific range of directed influence of radiating frequencies creates blockage in different areas of the body. Long-term blockages affect metabolism, create inflammatory processes, slowly causing biochemical and frequency changes, gradually transforming mutated cells to tumor formations. The character of tumor formations depends on the characteristics of the radiating frequencies and the immune system's biochemical reactions to these frequency influences.



Changes occur in specific areas as frequency influences degrade activity of healthy cells, start biochemical changes and cause development of stagnation with accumulation, gradual changing and weakening of cells. Positive changes, including stop of growth, reduction or full disappearance of tumors can be achieved much easier by correcting frequency in the destroyed areas.

The Property Influence of Material on Health

The majority of dental materials used in the repair of teeth have parameters of negative frequencies, which do not correspond to frequencies of healthy cellular structures in the mouth. This leads to negative infringements in the work of the body and to an occurrence of many chronic diseases.

Primary infringements are expressed by qualitative changes of metabolism, blood circulation, and in the working mechanics of muscles in the mouth and bone marrow, which entail physical, biological and biochemical changes in structures of the skull and in the entire body.

The occurrence of such destruction is provoked by a difference of frequency characteristics between healthy cellular mass and the mixture of frequencies from the incoming combination of interrupting frequency and chemical essence of inappropriate dental materials.

Inappropriate frequency influences of electromagnetic fields emitted by dental materials change properties and force contractions in muscular pressure of the mouth, gradually limiting work of the bone marrow responsible for circulation and biochemical and power energy processes occurring in the brain. The majority of changes in a body occur due to a change of influence of power properties and frequency parameters on a healthy cellular mass and the vital processes in a body.

The result of such influences can be expressed as a thinning in the walls of some blood vessels, effect on elasticity, regeneration, the change of thickness in the vessels and varicose formation. The altered biochemical and biomagnetic properties of blood vessel walls and the muscles around them change the correct reduction ability of the vessels which influence force and speed of the blood stream, cholesterol accumulates on the walls, settles and collects, partially or completely blocking the stream of blood movement in some areas.

Contractions of the face muscles due to stressful pressure from electromagnetic fields emitted by the majority of dental materials cause premature occurrence of wrinkles and strongly influence the ageing process.

The influence on cellular structures in the body from different biochemical and electromagnetic properties of destructive materials sometimes leads to breaks in blood vessels and the appearance of hemorrhages or stroke.

In connection with a change in biomagnetic abilities of cellular structures, blockage occurs leading to disc compression along the entire backbone and in the neck area, an increase of blood pressure, creation of stress contractions, changes in volume of bone and muscular tissues, occurrence of arthritic pains in joints and muscles, and loss of cartilage, elasticity and mobility.

When live functioning structures of the body which are constantly exchanging information signals come into contact with materials having rigid, constant forms of frequency parameters, they physically encounter an obstacle deterrent to processes of normal functioning.

Trying to cope with such intrusion, cells start to react roughly to the presence of disturbing frequency of materials, which becomes a serious interruption to the work of the vascular system and the entire body.

Frequency parameters from the overwhelming majority of dental materials suppress the ability of nearby cellular structures to live and also radiate destroying frequencies through nerve tissues to other areas of the body and create muscular and bone changes.

Negative influences of some dental materials often lead to occurrences of osteoporosis and related bone loss, premature deterioration and ageing of cells in the body, varicose changes in the blood system including weakening of blood vessel walls and all consequences connected with that due to a change of blood pressure in certain areas or in the entire body. All these contribute to changes in the coronary system and are a major part of the essential reasons of occurrence of cardio vascular diseases.

Most cements, plastics, metals or porcelains do not allow cells of the body to function normally. Because of that, biochemical response reactions produce a lot of energy which creates strong static pressure causing contractions, a gradual dissolving and partial washing away of inappropriate material particles. If cells adjoining an inappropriate dental material do not manage to push it out, the immune system tries to dissolve the inappropriate material. Dissolution of dental materials occurs from discrepancies of frequency parameters of the materials to power parameters of a healthy cellular mass. When those particles travel and spread in the body, that also affects the bodily functions.

The presence of incompatible particles from different dental materials in all areas of the body occurs due to frequency discrepancy between dental materials and healthy cells. When it does not manage to wash away a destructive material possessing the strongly expressed frequency features of motionless fields (including dead, blocking, hard and suppressing fields), the immune system tries to block this area from transmitting the destructive frequencies. This gradually creates a hardening in the area around the wrong dental material, complicating processes of blood circulation and the metabolism.

Teeth, bone and muscular tissues located in the area of influence from materials of negative frequencies do not receive enough supply of nutrients, and start to change in size and form as they dry out. Blockage from inappropriate frequencies of dental materials will cause a weakening of blood circulation and muscle ability of the gums, gradually creating a disappearance of teeth and bone tissues.

The information indicating that the dental industry's use of plastic is better than the use of metals is only partially correct. Plastic possesses chemical and frequency structures, which slow down circulating processes, negatively influencing the metabolism. The solubility of plastic is much higher than other dental materials.

Even plastic falling within Health Frequency® parameters can break down into carcinogenic components which travel throughout the entire body and create an imbalance of normal functioning, causing various problems.

The healthier the body is, the more actively expressed reaction occurs due to the discrepancy contrast of cellular structures with the negative influence of materials, strongly showing the effect of negative changes by causing various diseases.

It is possible to achieve even a reversal of Scleroderma by using exact technological processes with correct materials and following certain medical attention. Similar results are also possible with Parkinson's, Alzheimer's, and MS, some cancers and many other diseases and conditions. The ageing of a body is also dependent on the proper use of these materials.

After replacing dental materials with ones corresponding to Health Frequency®, regenerating processes can help restore lost functions in damaged areas of the body.



© Victor Dymont 2007

Website links to articles about the dangers of Mercury amalgam, but that apply to all dental material of negative frequency:

milledental.com/millennium/webvideo/MercuryDanger.html (video of smoking mercury)

<http://www.relfe.com/mercury.html> Amalgam (Mercury Fillings): The Great Dangers Scientifically Proven Facts About Dental Amalgam (Mercury Fillings)

<http://www.holisticmed.com/dental/amalgam/> Amalgam / Mercury Dental Filling Toxicity

<http://www.cfs-recovery.org/mercury.htm> Root Canals, Extractions and Mercury Amalgam Fillings
(Dangers of Composite Materials)

<http://www.dentalwatch.org/hg/myths210.html> Amalgam - Resurrection and Redemption Part 2: The Medical Mythology of Anti-Amalgam

<http://adr.iadrjournals.org/cgi/reprint/6/1/55.pdf> Local and Systemic Responses to Dental Composites and Glass Ionomers